

Silver onlay copper strips

Clad metal manufacturing, more than 10 years manufacture experience, attained ISO9001, work on OEM and ODM projects..

1.Introduction of the Silver onlay copper strips

Silver clad strip is is a kind of new functional composite material. It is based on the copper or copper alloy. Precious metal, silver or silver alloy are cladded on the base metal as an inlay or overlay through special bonding process.

Silver Clad Metal Material is suitable for continuous automatically manufacture . It does not need other manufacture process, such as welding or soldering after its formation .

It is saving precious metal, keeping low cost and consistency of social development.



2. Application of Silver onlay copper strips

Silver clad strip mainly used for all sorts of electrical component production, such as, micro motors, electrical brush, commutator, jiggle plug/socket, relay, connector, tuner, etc.

It is also suitable for continuous automatically manufacture.



3. Main Materials for Silver onlay copper strips

Face material : Ag,AgNi,AgCdO,AgSnO₂, AgSnO₂In₂O₃

Base material: Cu, brass, Phosphor copper, Beryllium copper

Material Series	Composition (%)	Hardness (Hv)	Electrical Conductivity (%IACS)	Density (g/cm ³)
Ag	Ag 99.95	30~70	104	10.5
	Ag 99.85,Ni 0.15	35~75	102	10.5
AgCu	Ag 80,Cu 20	75~125	82	10.2
	Ag 75,Cu 25	80~130	75	10.1
AgNi	Ag 90,Ni 10	80~100	90	10
	Ag 85,Ni 15	85~105	85	9.9
AgSnO ₂	Ag 92,SnO ₂ 8	70~115	85	10
	Ag 90,SnO ₂ 10	70~125	83	9.9
	Ag 90,SnO ₂ 10	80~120	75	9.6
AgSnO ₂ In ₂ O ₃	Ag 92,SnO ₂ In ₂ O ₃ 8	70~115	80	10
	Ag 90,SnO ₂ In ₂ O ₃ 10	80~120	75	10
	Ag 88,SnO ₂ In ₂ O ₃ 12	80~125	70	10

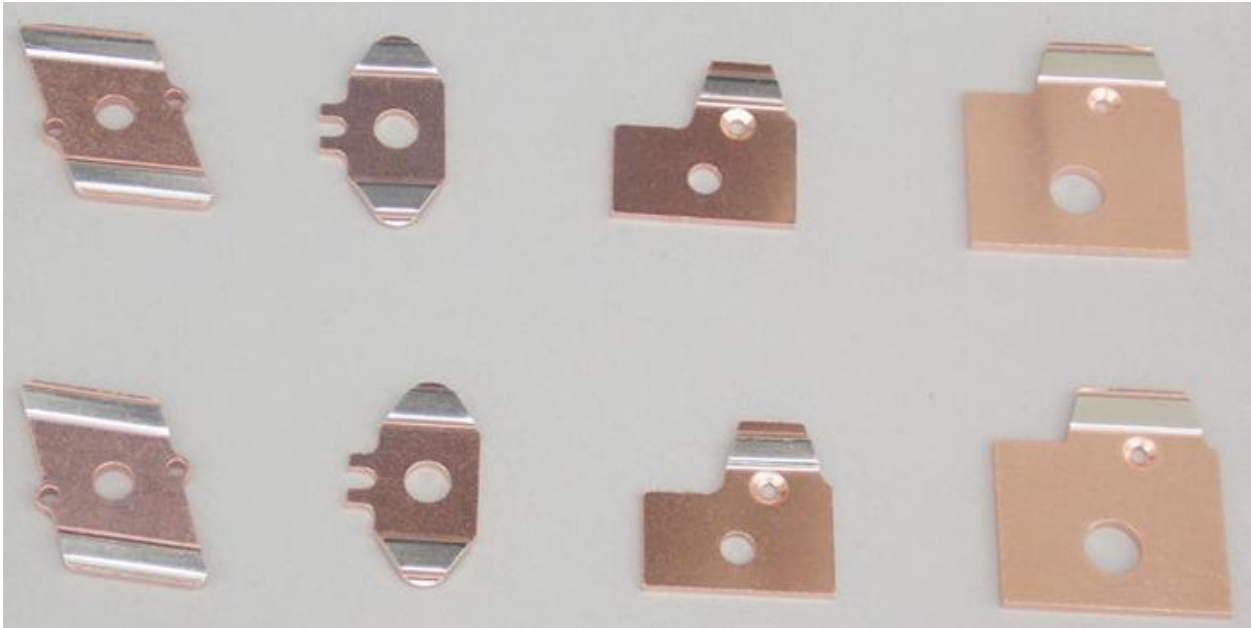
4.Specification of Silver onlay copper strips

Dimensions can be customized

Total Width	Silver Width	Total Thickness	Silver Thickness	Total Width Tolerance	Total Thickness Tolerance
1.5-60	1.5-60	0.1-0.5	0.05-0.3	±0.5	±0.03
1.5-60	1.5-60	0.6-1.5	0.05-1.0	±0.1	±0.05
1.5-60	1.5-60	1.6-3.0	0.05-1.5	±0.2	±0.08

5. Product types for Silver onlay copper strips

One layer Onlay, two layers overlay, Multi-layer... ..

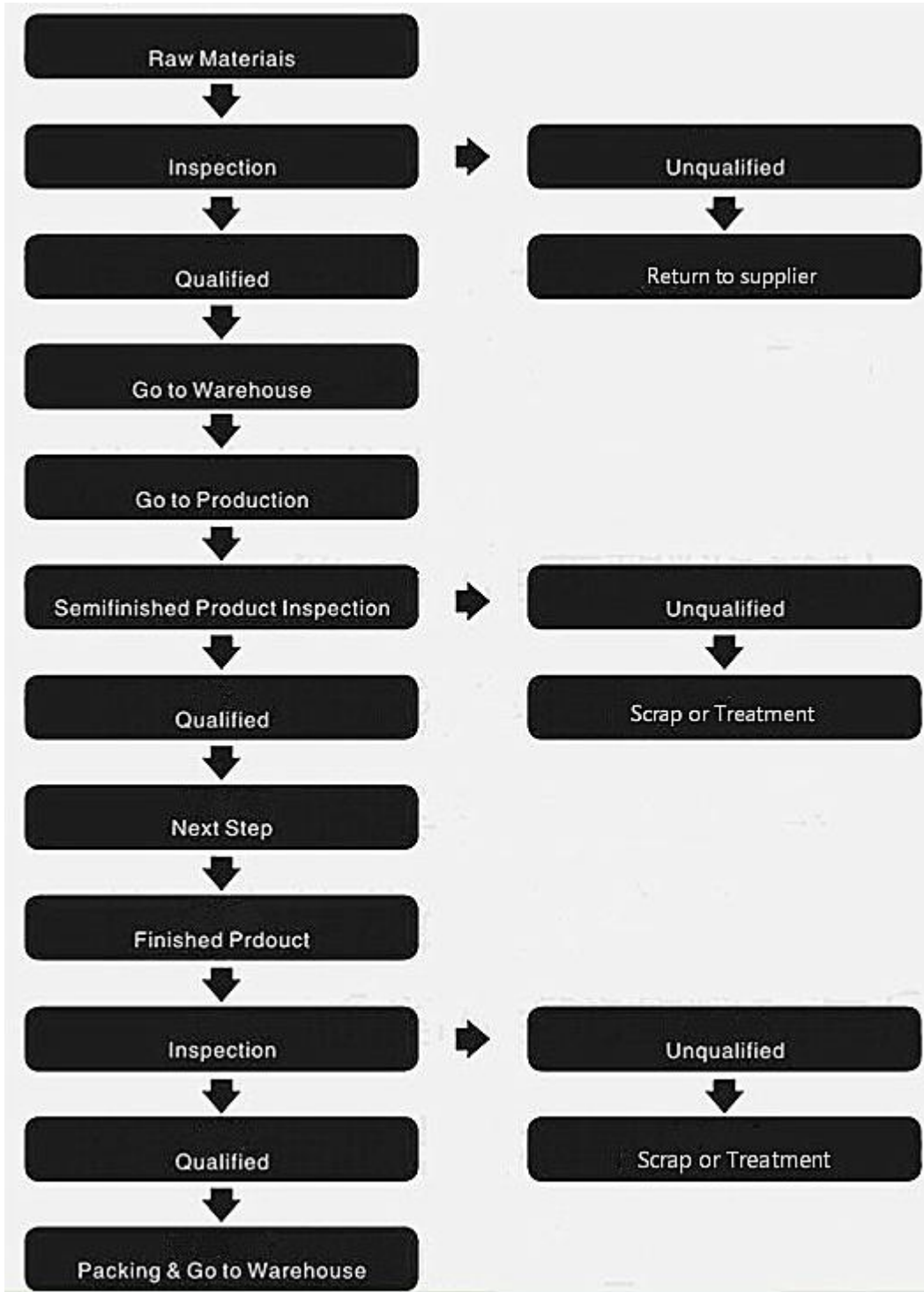


6. Manufacture plant of Silver onlay copper strips

Germany Hi-precision Roller Machine; Hi-precision Vertical Cutting Machine; Slotting Machine; High-precision punch machine.



7. Quality control for silver onlay copper strip



8. Tests and inspection for Silver onlay strips

Test instrument : Metallographic Microscope; Digital Light Processor; Strength Tester; Hardness Tester.



9. Packing and shipping for Silver onlay strips

Packing:

First put into Vacuum sealed plastic film, then Fill with sponge into the hard cardboard carton box, each box won't excess the weight 30kg..



Shipping:

We will choose the best way according to customer's requests.

1. By Air, to the indicated airport.
2. By Express (FedEx, UPS, DHL, TNT, EMS), to the indicated address.
2. By Sea, to the indicated sea port.



10. Questions and Answers

a1. Do you have ISO certificate?

Yes, we obtained ISO9001

a2. How long is your delivery time for silver onlay strip?

20-25 days depend on the raw material condition

a3. Do you make parts according to our design?

Yes, we always do as per customers drawings or Technical documents

a4. How do you control quality?

We produce strictly according to customer's drawings and requests, here are strict control plan in every process, full check of each parts, strive to provide customer 100% quality products, ROHS/SGS test report, material certificate are available.

a5. Do you provide sample? Free or charge?

Yes, if the sample in stock available, free of charge, if not, need to charge some mfg cost.